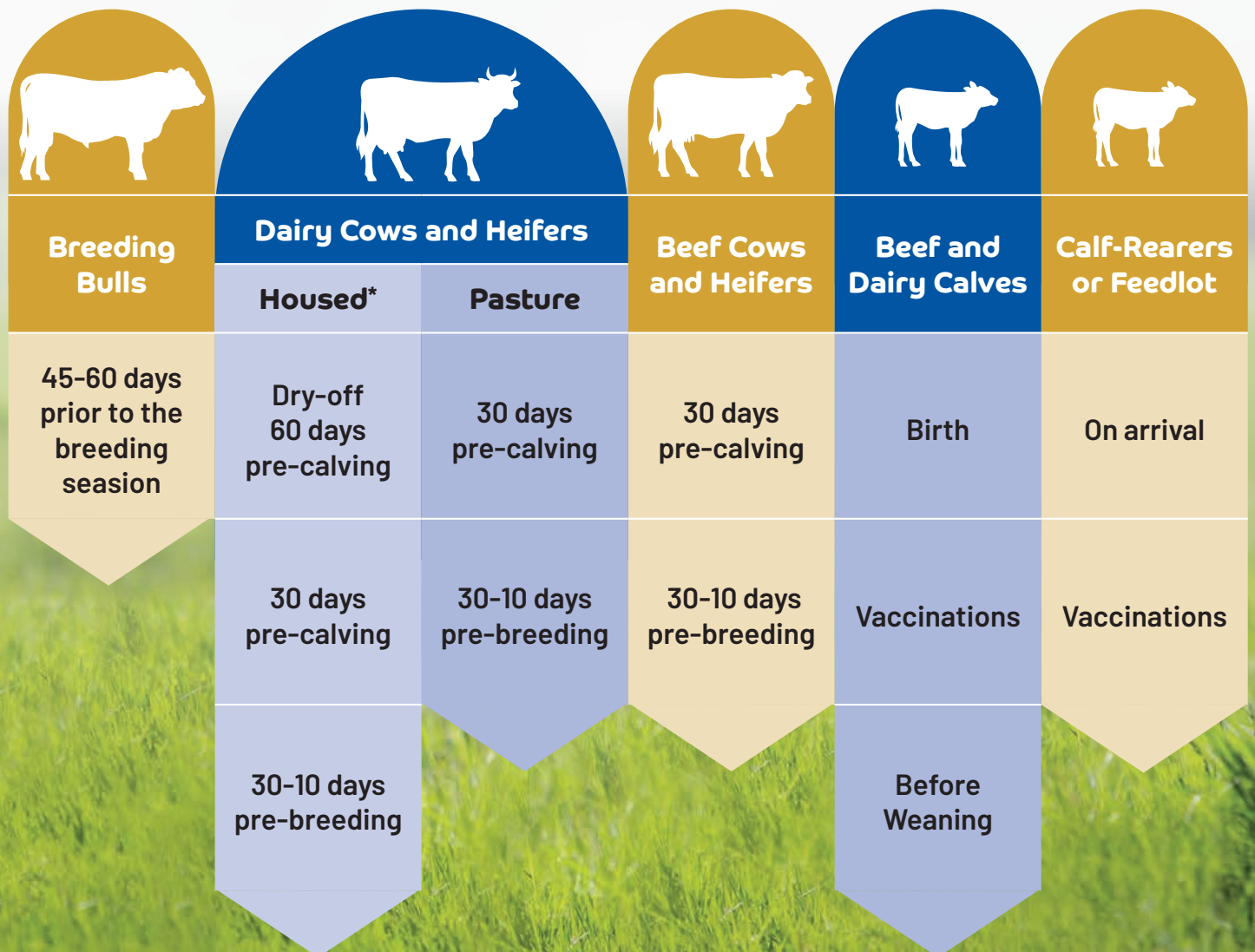


When to use MultiminTM

Topping up trace minerals ahead of high demand points in the production cycle can help cattle respond more effectively to disease and stress. ^{1,2}

Used strategically, at critical stages, Multimin helps to meet increased trace mineral requirements, where oral supplementation alone may not.



*Studies have shown the benefits of administering Multimin to dairy cows during the transition period. Suggested dosing points are at dry off and/or pre-calving and/or pre-breeding as illustrated²

1. Machado VS, Oikonomou G, Lima SF, Bicalho MLS, Kacar C, Foditsch C, Felipe MJ, Gilbert RO, Bicalho RC (2014) The effect of injectable trace minerals (selenium, copper, zinc and manganese) on peripheral blood leukocyte activity and serum superoxide dismutase activity of lactating Holstein cows. The Veterinary Journal 200: 299-304 2. Machado VS, Bicalho MLS, Pereira RV, Caixeta LS, Knauer WA, Gilbert R, Bicalho R. Effect of an injectable trace mineral supplement containing selenium, copper, zinc and manganese on the health and production of lactating Holstein cows. Vet J. 2013 Aug;197(2):451-6

MULTIMIN solution for injection for cattle contains selenium, copper, manganese and zinc. POM-V

Advice on the use of this medicine should be sought from your veterinary surgeon. Prescription decisions are for the person issuing the prescription alone.

Further information on the SPC available from: Virbac Ltd, Woolpit Business Park, Windmill Avenue, Woolpit, Bury St. Edmunds, Suffolk IP30 9UP.

Tel: +44(0)1359 243243 UK; Email: enquiries@virbac.co.uk www.virbac.com

Use medicines responsibly www.noah.co.uk/responsible

Shaping the future
of animal health

Virbac